

TERMINAL BLOCKS FOR P.C.B. RISING CLAMP

MORSETTI PER C.S. CARRELLO

BLOCS DE JONCTION C.I. ÉTRIER REMONTANT

PRINTKLEMMEN LIFTPRINZIP

COB


Interlocking modules · Modulo componibile
Elements modulaires · Zusammensteckbare Blöcke




Poles · Poli · Pôles · Polzahl

2/3



Pitch Pas	Passo Rastermaß	mm
Rated Voltage Tensione nominale Tension nominale	Tensione nominale Bemessungsspannung	V
Rated Current Intensité nominale	Corrente nominale Bemessungsstrom	A

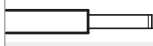
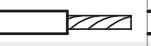


Types of cables Type du conducteur	Tipo cavi Leitungstypen	
Nominal cross section Section nominale	Sezione nominale Nennquerschnitt	mm ² AWG
Stripping length Longueur de dénudage	Lunghezza spelatura Abisolierlänge	mm
Torque Couple de serrage	Coppia di torsione Drehmoment	Nm Lb-in
Temperature Température	Temperatura Temperatur	°C
Housing Corps isolant	Corpo isolante Isolierkörper	
Captive Screw Vis Imperdabile	Vite Imperdibile Unverlierbare Schraube	
		mm

	IMQ	EN60998
	VDE	EN60998
	cUL	UL1059 + C22.2 n°158

Poles Pôles	Poli Polzahl	X
Colours Couleurs	Colori Farben	Y

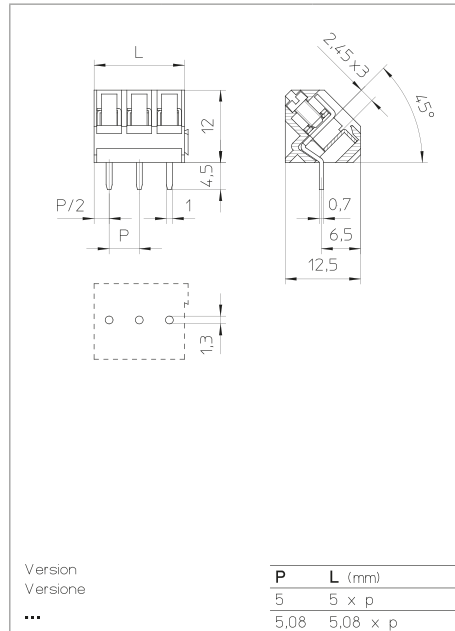
How to order Référence de commande		Ordinazione Bestellschlüssel			
COB	5	/ X	...	Y	N...
Type	Pitch	Poles	Version	Colors	Printing
Tipo	Passo	Poli	Versione	Colori	Numerazione
Type	Pas	Pôles	Version	Couleurs	Marquage
Typ	Rastermaß	Polzahl	Version	Farben	Bedruckung

5 - 5,08
160
24

		
0,2 ÷ 4 30 ÷ 12	0,2 ÷ 2,5 30 ÷ 12	0,2 ÷ 2,5 30 ÷ 12
6		
0,5	/	4
110		
PA - UL 94 V0		
M3		
	0,6 x 3,5	

V	A	mm²/AWG
130	24	0,5 ÷ 2,5
130	24	0,5 ÷ 2,5
300	16	24 ÷ 12

min 2 - max...	
GR	/ on demand VE



*P = Pending

*SQ Version = Horizontal version